



Wythburn Street, Salford

£1,100 PCM

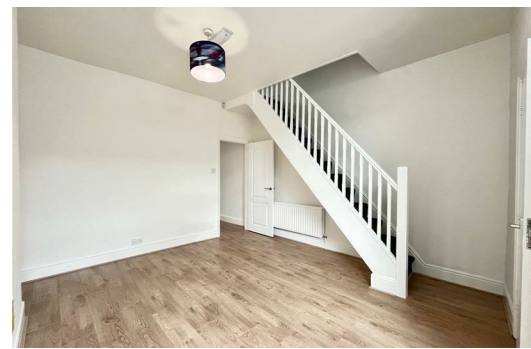
Step inside this recently refurbished TWO bedroom terraced house on Wythburn Street, Salford. The property has been updated throughout, with a clean and modern finish. It offers a practical layout and is ready to move into.

Upon entry, you're greeted with a light, bright entrance hallway that immediately feels welcoming and spacious. There's a cozy front reception room making great space for a lounge or dining room! Beyond this is a versatile reception room that could serve as a dining area, home office, or extra sitting room – basically whatever your heart desires. The modern fitted kitchen sits to the rear, ready for you to whip up anything from a quick breakfast to a Michelin worthy feast!

Upstairs, you'll find a stylish modern bathroom with a three-piece suite, offering a bit of luxury every morning, think spa vibes but without the robe and cucumber slices!
There's a large double master bedroom, and a single second bedroom, each with plenty of space!

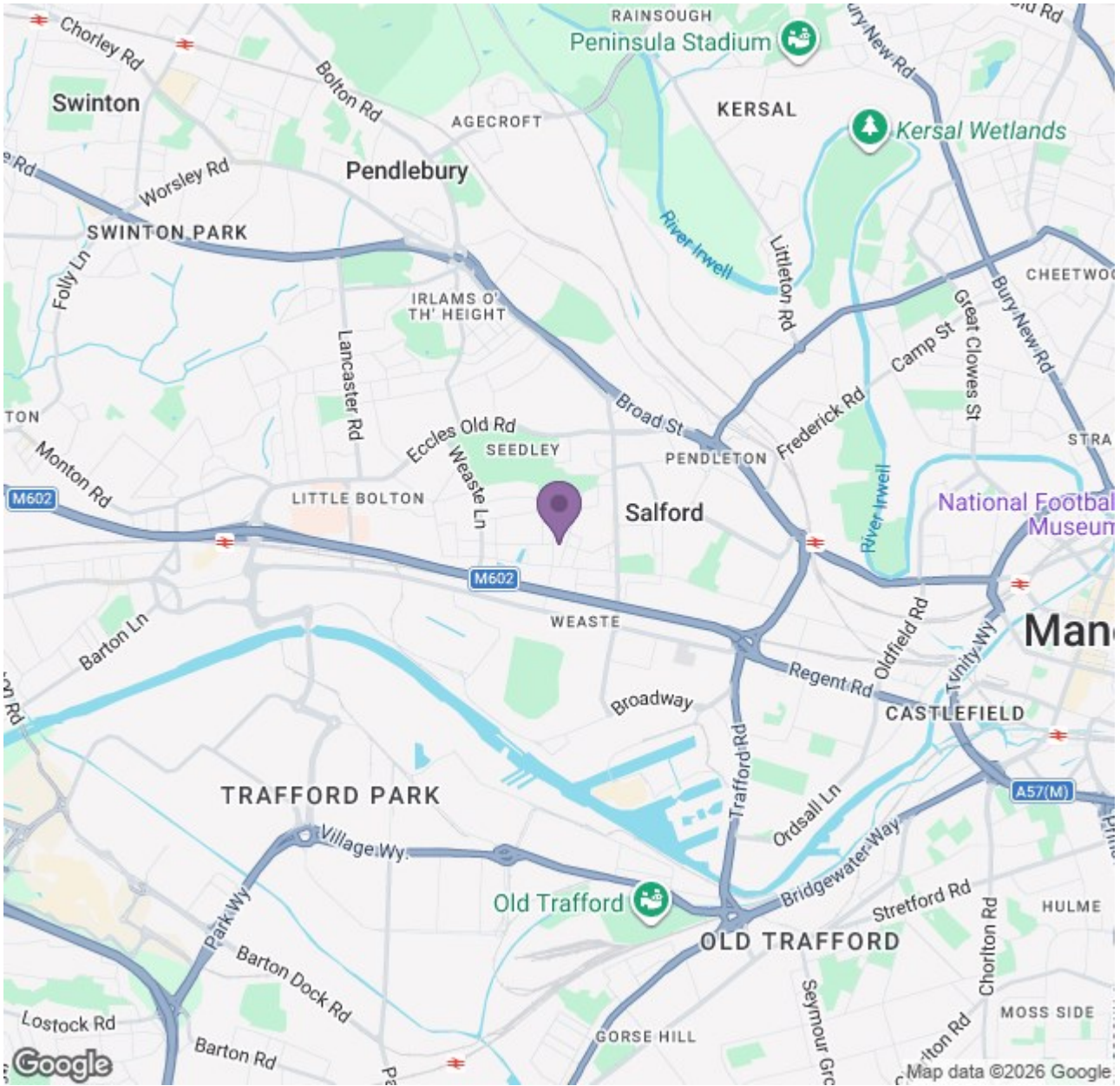
Externally, there's a rear yard, perfect for a barbecue, a few potted plants, or a quiet spot to enjoy a cup of coffee without your neighbours judging your garden gnome collection.

Location-wise, it's hard to beat. Literally on the M602, with direct access to the M62, it's a commuter's dream. Manchester city centre and Salford are just minutes away, so whether you're a young family looking for convenience or a professional couple wanting easy links to work and play, this property ticks all the boxes.



Ascend

Built on higher standards



Energy Efficiency Rating		Environmental Impact (CO ₂) Rating	
Current	Target	Current	Target
83	83	83	83
82	82	82	82
81	81	81	81
80	80	80	80
79	79	79	79
78	78	78	78
77	77	77	77
76	76	76	76
75	75	75	75
74	74	74	74
73	73	73	73
72	72	72	72
71	71	71	71
70	70	70	70
69	69	69	69
68	68	68	68
67	67	67	67
66	66	66	66
65	65	65	65
64	64	64	64
63	63	63	63
62	62	62	62
61	61	61	61
60	60	60	60
59	59	59	59
58	58	58	58
57	57	57	57
56	56	56	56
55	55	55	55
54	54	54	54
53	53	53	53
52	52	52	52
51	51	51	51
50	50	50	50
49	49	49	49
48	48	48	48
47	47	47	47
46	46	46	46
45	45	45	45
44	44	44	44
43	43	43	43
42	42	42	42
41	41	41	41
40	40	40	40
39	39	39	39
38	38	38	38
37	37	37	37
36	36	36	36
35	35	35	35
34	34	34	34
33	33	33	33
32	32	32	32
31	31	31	31
30	30	30	30
29	29	29	29
28	28	28	28
27	27	27	27
26	26	26	26
25	25	25	25
24	24	24	24
23	23	23	23
22	22	22	22
21	21	21	21
20	20	20	20
19	19	19	19
18	18	18	18
17	17	17	17
16	16	16	16
15	15	15	15
14	14	14	14
13	13	13	13
12	12	12	12
11	11	11	11
10	10	10	10
9	9	9	9
8	8	8	8
7	7	7	7
6	6	6	6
5	5	5	5
4	4	4	4
3	3	3	3
2	2	2	2
1	1	1	1
0	0	0	0